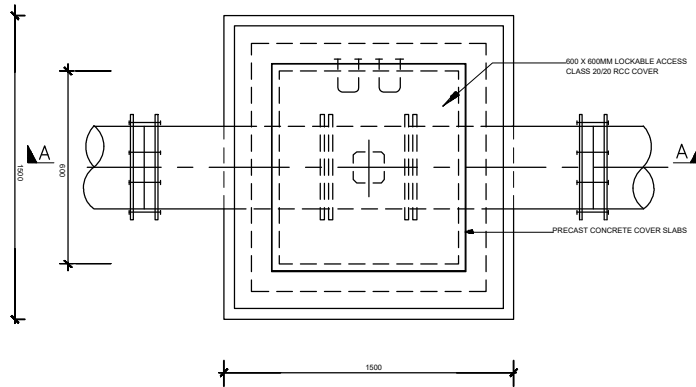
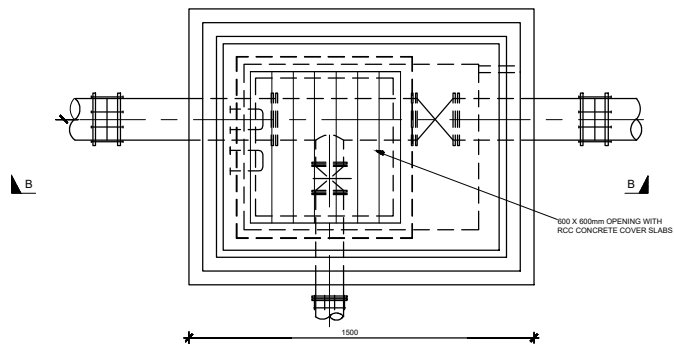


**AIR VALVE CHAMBER**

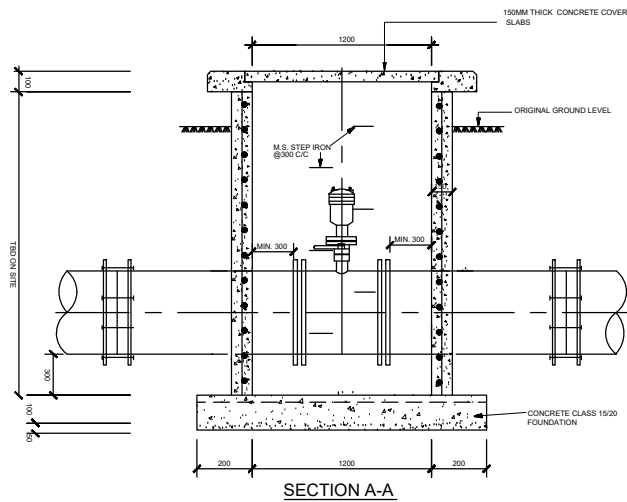


**PLAN OF CHAMBER**

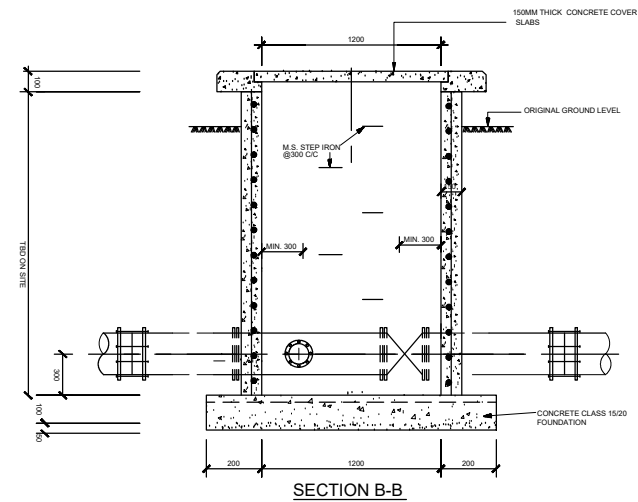
**VALVE CHAMBER DETAILS AT JUNCTIONS**



**PLAN OF CHAMBER**



**SECTION A-A**



**SECTION B-B**

**CONSTRUCTION DETAILS FOR VALVE CHAMBERS**

**A. GENERAL NOTES**  
 1. This drawing must be read in conjunction with other specifications detailed in the contract document  
 2. The contractor confirm all dimensions on site before commencing  
 3. All Dimensions are in mm unless specified  
**B. CONCRETE**  
 4. Concrete works to Structural elements is class 20/20, mix 1:2:4

**D. EXCAVATIONS**  
 12. All black cotton soil must be removed.  
 13. All Excavation works must be inspected and approved by the Structural Engineer before casting  
 14. Backfilling around the concrete shall be done using approved imported murram filling

**F. TIMBER WORK**  
 15. Marine board formwork c/w timber brackets to be approved by the Engineer before casting

CLIENT  
 **KISUMU WATER AND SANITATION COMPANY LTD**

PROJECT TITLE  
**PROPOSED PROJECT SIGN BOARD**

DRAWING TITLE  
**SECTIONAL VIEW OF PROJECT SIGN BOARD**  
 CIVIL AND STRUCTURAL ENGINEERS CONSULTANTS  
 CHIEF ENGINEER TECHNICAL SERVICES  
 KISUMU WATER AND SANITATION COMPANY LTD  
 P.O BOX 3210-40100  
 KISUMU

SCALE(S)	AS SHOWN		
REVISION 01			
NAME	SIGN	DATE	
DESIGNED		13-04-2023	
DRAWN			
CHECKED BY			